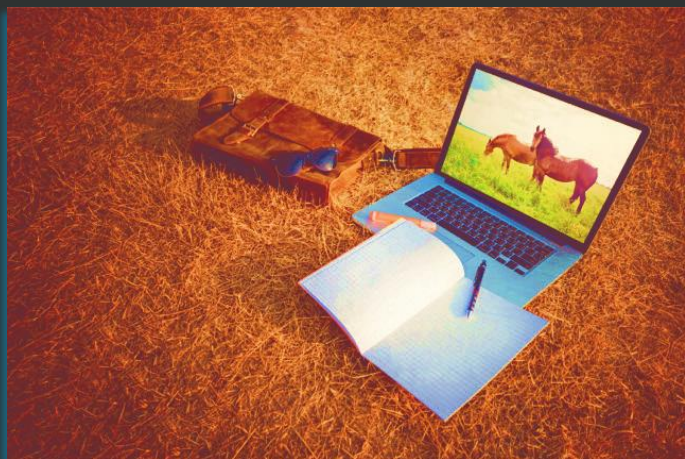


Scholarships



About Us

NESAR (New England Special Activities Resources, Inc.) is a non-profit organization established in 1990 to help facilitate the delivery of services to people with special needs in PATH Intl. Region 1. Today, NESAR supports education for PATH Intl. Region 1 members.

Scholarships

- PATH Intl. workshops
- PATH Intl. Conferences
- Education for CEU's
- EAAT Clinics/Workshops
- Awards: up to 75% or \$500
- PATH Intl. Members/Reg. 1
- Covers Tuition Only
- Need-based

For more information and our scholarship application, go to <https://bit.ly/2YnJiyZ>. Applications are accepted online or by mail. Approved awards are issued as reimbursement *after* receipt of awardee's evaluation of program attended.

What can a NESAR Scholarship support?

NESAR Scholarships are intended to support PATH Intl. Region 1 members with achieving and maintaining PATH Intl. certifications. Awards cover up to 75% or \$500 (whichever is less) of the tuition cost for educational programs.

The scholarship program provides reimbursement for tuition costs for programs that enhance expertise in areas directly related to Equine Assisted Activities & Therapies.

Apply today!

**Applications must be received two weeks prior to the scheduled event. Approved reimbursements will be awarded upon receipt of attendee's evaluation no later than 30 days after attending the event. Funds are awarded as resources allow.*



The more you know, the more places you'll go.

-Dr. Seuss

"The NESAR scholarship program made it possible for me to become a PATH Intl. therapeutic riding instructor. I had just gotten out of graduate school when I found PATH Intl.; I fell in love. After graduation came student loan repayment; since my budget was tight, I was seeking ways to be able to take my PATH Intl. workshop and test...that's when the NESAR scholarship was brought to my attention. I can truly say without the NESAR scholarship program I would not be where I am today working full time as a PATH Intl. instructor. I love this field and I love how willing to help everyone is."
-Kassandra Carefoot
MA, CRC
(Past Awardee)



PATH
INTERNATIONAL

Professional Association of Therapeutic
Horsemanship International

Questions? Contact us at
Region1Rep@pathintl.org