

Using Standardized Assessments to Measure Quality-of-Life Outcomes of Adaptive/Therapeutic Riding

Kathy Alm, CEO
PATH Intl.

B. Caitlin Peters, Ph.D., OTR/L
Assistant Professor



TEMPLE GRANDIN
EQUINE CENTER
COLORADO STATE UNIVERSITY

Colorado State University

1

Today's Presentation

01 Where we started:
Process to Create Assessment Protocol

02 Implementation:
Pilot Study

03 Where we are now:
Next Steps



Colorado State University

2

Workgroup Members

Leadership	Volunteers		
Kathy Alm PATH Intl.	Alex Johnson The Shea Center	Pebbles Turbeville Horses and Humans Research Foundation	Sherry Butler Temple Grandin Equine Center
Caiti Peters Temple Grandin Equine Center	Dr. Beth Fields OT, University of Wisconsin	Richard Griffioen IAHAIO	Joann Benjamin PT, AHCS
	Dana Butler ED, The Shea Center	Robin Gabriels Children's Hospital Colorado	Bret Maceyak PATH Intl.

Colorado State University

3




Focus on Adaptive/Therapeutic Riding

Health & Wellbeing	Outcomes	Barriers in Measuring Outcomes
		
<small>Adaptive/Therapeutic Riding improves health and wellbeing</small>	<small>Value of monitoring progress and measuring outcomes</small>	<small>Barriers to measuring outcomes of wellbeing at PATH Intl. centers</small>

Colorado State University

4

TGEC & PATH Intl. Assessment Protocol Initiative

	 <small>Gather Stakeholders' Input</small> <div style="border: 1px solid black; padding: 2px; display: inline-block; margin-top: 5px;">Step 1</div>	 <small>Select and Pilot Potential Assessments</small> <div style="border: 1px solid black; padding: 2px; display: inline-block; margin-top: 5px;">Step 2</div>
GOAL Identify standardized assessments that can be used by PATH Intl. Centers to measure health and wellbeing outcomes of adaptive/therapeutic riding		

Colorado State University

5

Gather Stakeholder Feedback


Thanks to Working Group for helping to create and pilot the survey
Thanks to Moriah Hanson for data analysis

01

Colorado State University

6

Survey Purpose



Gather feedback from stakeholders about the usefulness and feasibility of standardized assessments to measure participant outcomes of community-based adaptive/therapeutic riding.

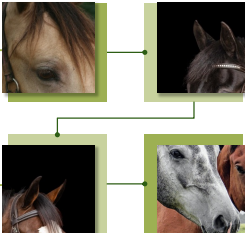
Colorado State University

7

Survey Research Questions

WHAT IS MEASURED CURRENTLY?

How are CTRIs currently measuring participants outcomes, if at all?



IMPORTANCE & MEASUREMENT

Do CTRIs and Center Leadership believe it is **important** to identify assessment? If so, **what participant outcomes should be measured?**

BENEFITS & BARRIERS

What are the **benefits** of, and **barriers** to, using standardized assessments to measure participant outcomes of adaptive/therapeutic riding?

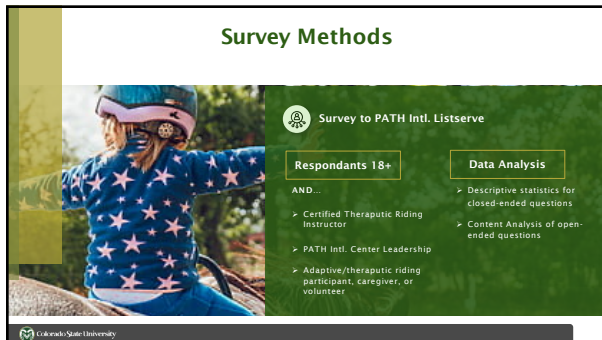
USEFUL QUALITIES

What **qualities of a standardized assessment would be most clinically useful** in the community-based adaptive/therapeutic riding setting? (cost, time, length, etc.)

Colorado State University

8

Survey Methods



Survey to PATH Intl. Listserve

Respondants 18+

AND...

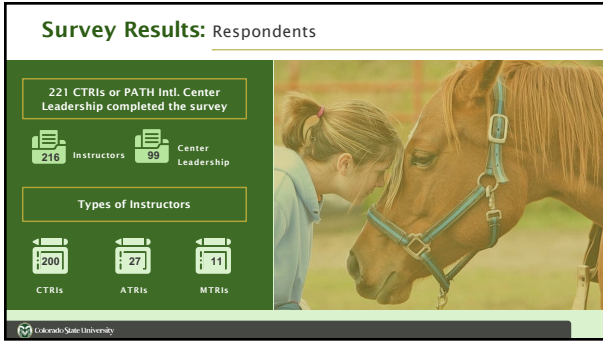
- > Certified Therapeutic Riding Instructor
- > PATH Intl. Center Leadership
- > Adaptive/therapeutic riding participant, caregiver, or volunteer

Data Analysis

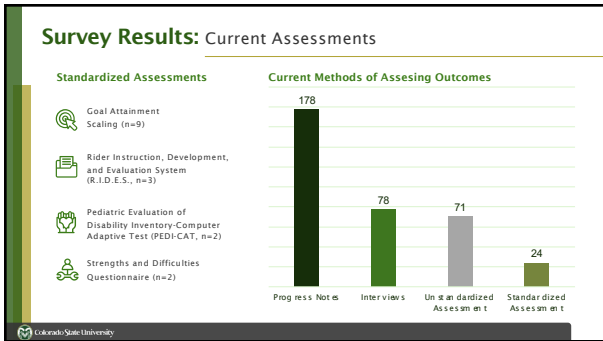
- > Descriptive statistics for closed-ended questions
- > Content Analysis of open-ended questions

Colorado State University

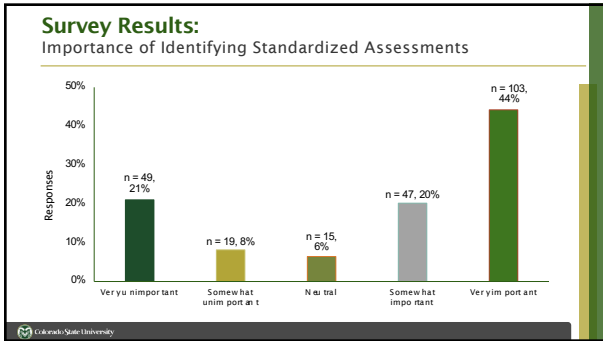
9



10



11

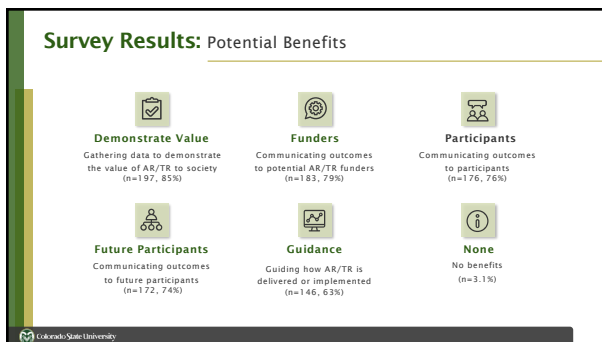


12

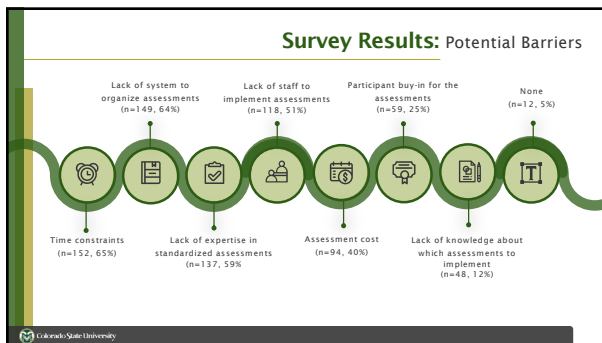
Survey Results: What Outcomes Should be Measured?

Outcome	Important to Measure	Likely to Improve	Survey Likert Scale Selections
Self-efficacy outcomes	4.50	4.39	5 Strongly Agree
Cognitive outcomes	4.45	4.28	
Communication outcomes	4.39	4.24	
Emotion regulation	4.44	4.20	
Quality of life outcomes	4.43	4.27	
Physical outcomes	4.42	4.37	4 Agree
Social outcomes	4.37	4.16	3 Neutral
Horsemanship skills	4.30	4.58	
Empathy outcomes	4.28	4.11	
Recreation/leisure outcomes	4.24	4.34	2 Disagree
Community integration	3.61	3.43	1 Strongly Disagree
Daily living activities	3.59	3.36	
Instrumental ADL outcomes	3.51	3.21	

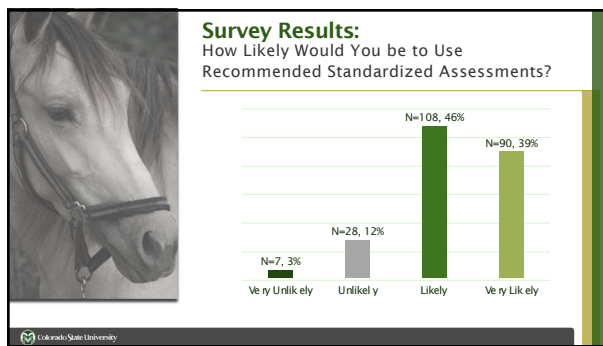
13



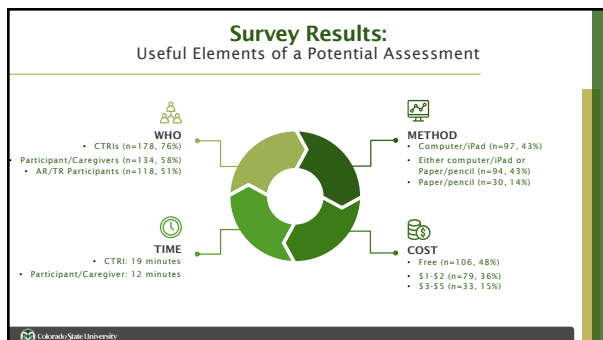
14



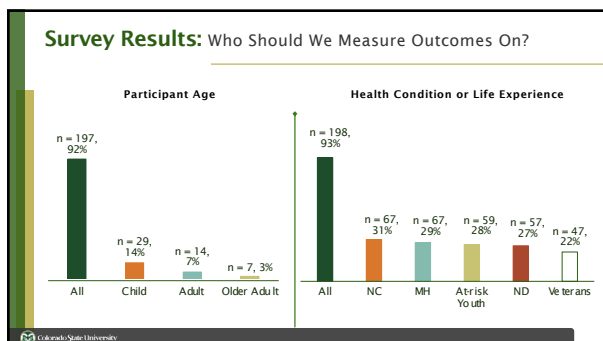
15



16



17



18

Survey Conclusions

Substantiated the need for this initiative

- 64% Believe it is important or very important to identify assessment(s)
- 85% Would use recommended standardized assessments
- 17% Currently using standardized assessments, primarily to measure horsemanship

Useful qualities of potential standardized assessments

- Brief
- Affordable
- Able to measure outcomes in diverse populations (age, diagnosis, etc.)
- Variety of health and wellbeing outcomes of interest

Colorado State University

19

Assessment Selection

01 Mobility 02 Peer Relationships 03 Global Health 04 Empathic Behavior 05 Emotional Control 06 Self-efficacy

PROMIS or NIH Toolbox Assessments

- Reliable and valid
- Brief
- Free
- No credentialing requirement
- Available online or paper/pencil

Reporter

- Ages 5-12: caregiver
- Ages 13-17: caregiver and self-report
- Ages 18+: self-report only

Adapted Scoring

Colorado State University

20

02 Pilot Assessments

Thank you to:

- Working Group for Help Developing the Protocol
- PATH Intl. Centers for Piloting the Assessments
- Sarah Reega for help with Data Collection
- Michelle Burcis and Jessica Lalone for Data Analysis

Colorado State University

21


Pilot Study: 3 PATH Intl. Premiere Accredited Centers

Riding Instructor Inclusion Criteria

- > Certified
- > Providing adaptive/therapeutic riding in Fall 2022 in accordance with PATH Intl. standards

Participant Inclusion Criteria

- > Participating in adaptive/therapeutic riding at a participating center in Fall 2022
- > Age 5-17: Caregiver capable of completing written questionnaire
- > Adults: Participant capable of completing written questionnaire

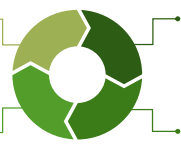


Colorado State University

22

Data Collection

Informed Consent **Demographic Data** **Assessments (4-6)** **Feasibility Questionnaire**



ELIGIBILITY
Site coordinators determined which riders were eligible

DISTRIBUTION OF MATERIALS
CTRIs provided participants/caregivers with data collection packets on first and last day

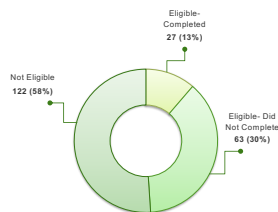
FEASIBILITY SURVEY
Site coordinators, leadership, and CTRIs completed feasibility survey

SCORING ASSESSMENTS
Site coordinators or CTRIs scored assessments

Colorado State University

23

Assessment Completion



Not Eligible 122 (58%)

Eligible-Completed 27 (13%)

Eligible-Did Not Complete 63 (30%)

Ineligibility

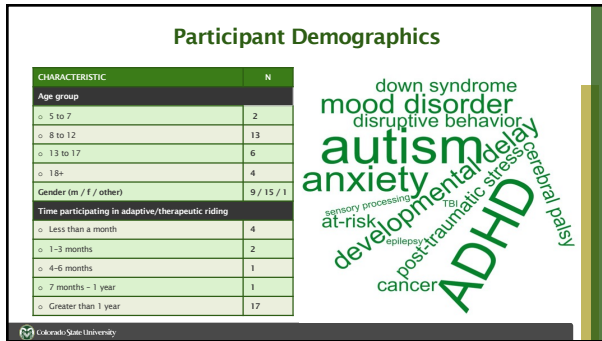
- Instructor-in-training providing lessons
- Adults not capable of self-report

Low Completion

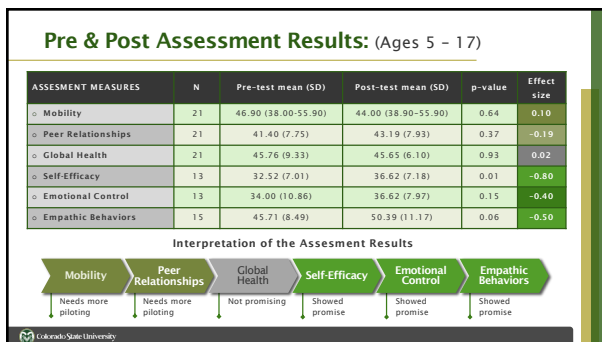
- Did not return last day packet

Colorado State University

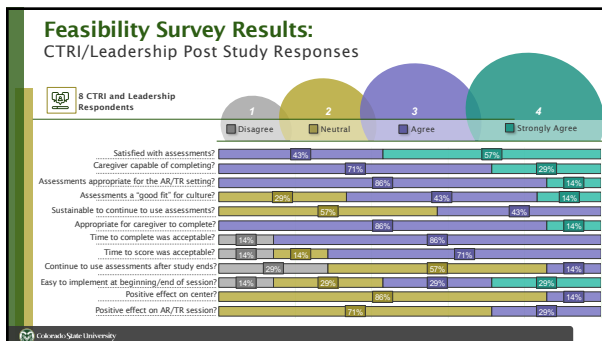
24



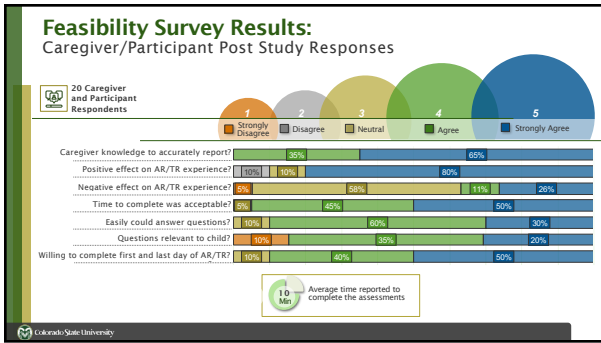
25



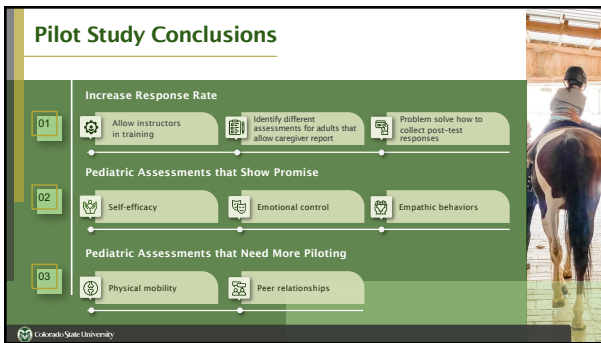
26



27



28



29



30



31
